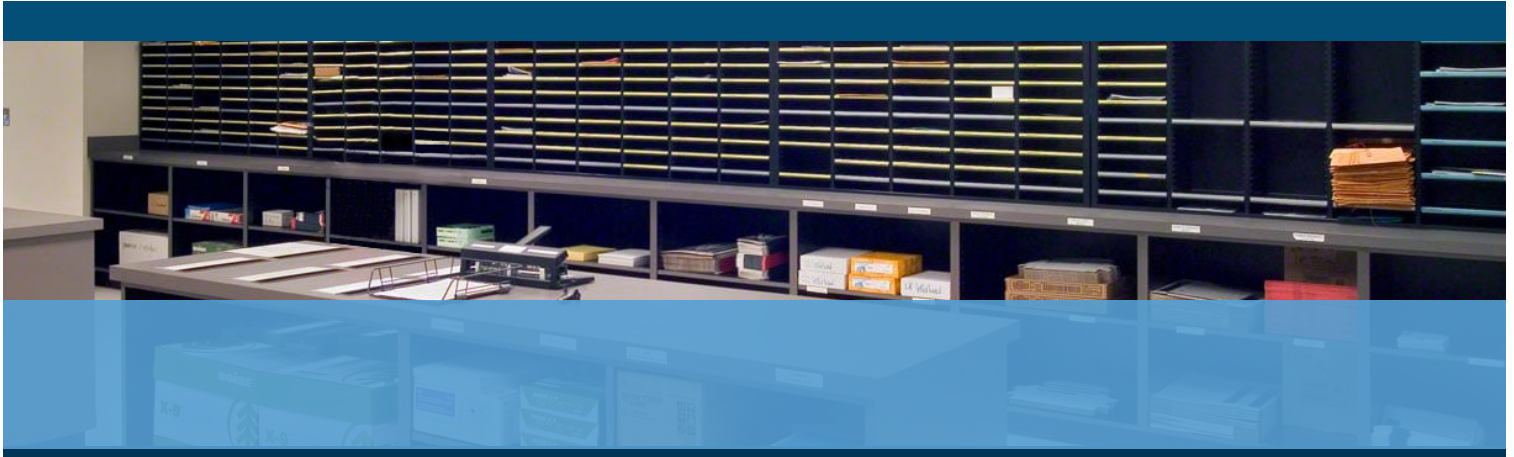




# FD 402P1

SINGLE-BIN PAPER JOGGER



- Aligns and reduces static electricity
- Up to 4,000 vibrations per minute
- Bin design allows paper dust to fall out
- On/off switch controls vibration speed
- Handles paper up to 11" x 17"

## FORMAX<sup>®</sup>

[www.formax.com](http://www.formax.com)

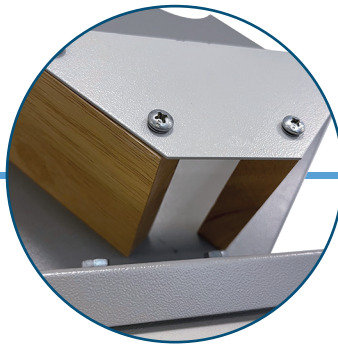
Local Dealer:

 [PaperFolder.com](http://PaperFolder.com)

The **FD 402P1 Single-Bin Paper Jogger** provides quick and easy alignment for a variety of paper sizes up to 11" x 17". Jogging helps to separate forms and sheets and **reduce static electricity** commonly caused by laser printers. The result is **more accurate feeding** through pressure sealers, folders, inserters and other paper handling equipment. Its **solid state switch controls on/off and vibration speeds**, up to 4,000 per minute, while the tilted rack helps to properly jog small paper stacks. **Electromagnetic design allows for continuous operation**, while the **slotted design allows paper dust, staples, paper clips to exit the jogging bin** for simple clean-up and maintenance.



*Solid State Control Knob*  
Controls power on/off, and vibration speed up to 4,000 vpm



*Slotted Clean Out*  
Allows paper dust, staples, and paper clips to exit the jogging bin for simple clean-up



*Handles Larger Sheet Sizes*  
Easily jogs sheets up to 11" x 17", in large or small stacks

## STANDARD FEATURES

- Reduces static electricity
- Solid state control switch
- Variable speed
- Tilted solid wood rack
- Electromagnetic design
- Handles media up to 11" x 17"
- Aligns up to 800 sheets 20#
- Slotted clean-outs

## SPECIFICATIONS

Variable speed	Up to 4,000 vibrations/minute
Bin size	3.5" D x 8.75" W x 15.5" L (89 x 222 x 394mm)
Media size	Up to 11" W x 17" L (279 x 432mm)
Sheet Capacity	Up to 800 sheets 20#
Dimensions	7.75" W x 19" L x 21" H (20 x 48 x 53cm)
Weight	28 lbs (12.7kg)
Power	115V (50/60 Hz) / Export 220V
Safety Certifications	UL & CE applied for