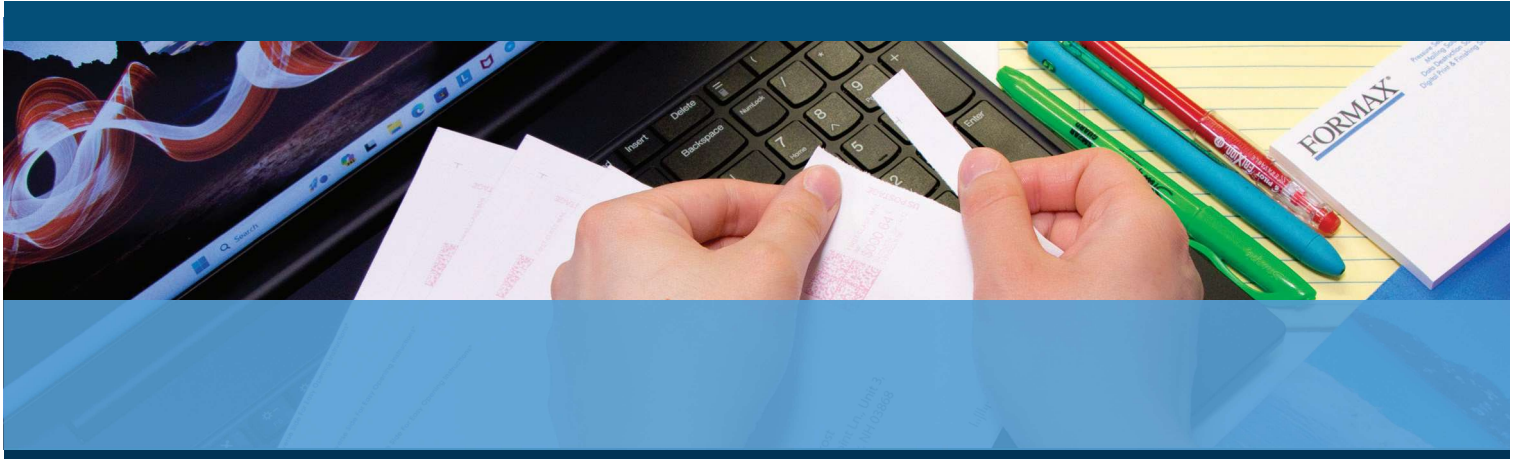




AutoSeal[®] FD 2036

HIGH-VOLUME TABLETOP PRESSURE SEALER



Shown with optional conveyor

- Color touchscreen control panel
- Drop-in feed system
- Six-digit resettable counter
- Processes up to 11,000 forms per hour
- Handles forms up to 14" long

FORMAX[®]

www.formax.com

Local Dealer:

 PaperFolder.com

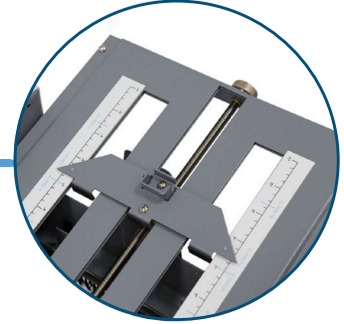
The **FD 2036 AutoSeal®** offers speeds of up to 11,000 forms per hour and the ability to process forms up to 14" long. Standard features include a **color touchscreen control panel**, **insulated fold plates to reduce noise**, and a **drop-in top feed system**, all in a compact and sleek desktop design. **Fold plates are pre-marked** for standard folds for 11" and 14" form sizes, and can be easily adjusted for custom folds. Fold types include Z, C, Uneven Z and C, Half and custom folds. Pressure seal mailers can be used for virtually any application that can be printed on one form, including checks, invoices, school reports, tax forms and appointment notices. **Proudly made in the USA**, the FD 2036 is built with proven Formax technology, and the durability to last.



Color Touchscreen Control Panel
Graphics-based and designed for easy, walk-up use



Drop-In Feeding System
Dependable feeding of forms with no paper fanning required



Easy to Adjust Fold Plates
Clearly marked and easy to adjust for popular and custom folds



Adjustable Catch Tray
Accommodates any fold type, stacks forms neatly and sequentially



Insulated Fold Plates
Top, side covers, and fold plates are insulated to reduce noise

STANDARD FEATURES

- Color touchscreen control panel
- Drop-in feed system
- Infeed holds up to 350 forms
- Easy to adjust fold plates
- Paper jog control to inspect fold
- Processes forms up to 14" long
- Folds Z, C, uneven Z and C, half and custom folds
- Compact, rugged tabletop design
- Insulated to reduce operating noise
- Six-digit resettable counter
- Adjustable catch tray
- Adjustable infeed side guides

OPTIONS

- P2036: Package that includes the FD 2036, 18" conveyor and cabinet
- 18" Conveyor with photo eye
- Reverse Stacking Conveyor: Allows for A-to-Z input and A-to-Z output
- Locking Cabinet with casters
- 402 Series Jogger

SPECIFICATIONS

Hopper Capacity	Up to 350 forms 20#
Fixed Speed	Up to 11,000 forms per hour, based on 11" Z fold
Paper Size	Up to 8.5" W x 14" L (216 x 356mm)
Fold Types	Z, C, Uneven Z and C, Half, Custom
Monthly Duty Cycle	Up to 75,000/month
Dimensions	25.75" L x 16.5" W x 14.25" H (654 x 419 x 362mm)
Dimensions with 18" Conveyor & Cabinet	46" L x 22" W x 44" H (1168 x 559 x 1118mm)
Weight	88.5 lbs (40kg)
Power	FD Model: 120 Volts AC 50/60Hz FE Model: 220 Volts AC 50/60Hz
Document Sequence	Standard sequence is A-to-Z input, Z-to-A output
Certifications	UL, CE, and CUL Approved
Made in USA	
U.S. Patents 5,772,841 5,865,925 5,968,308 6,264,592	