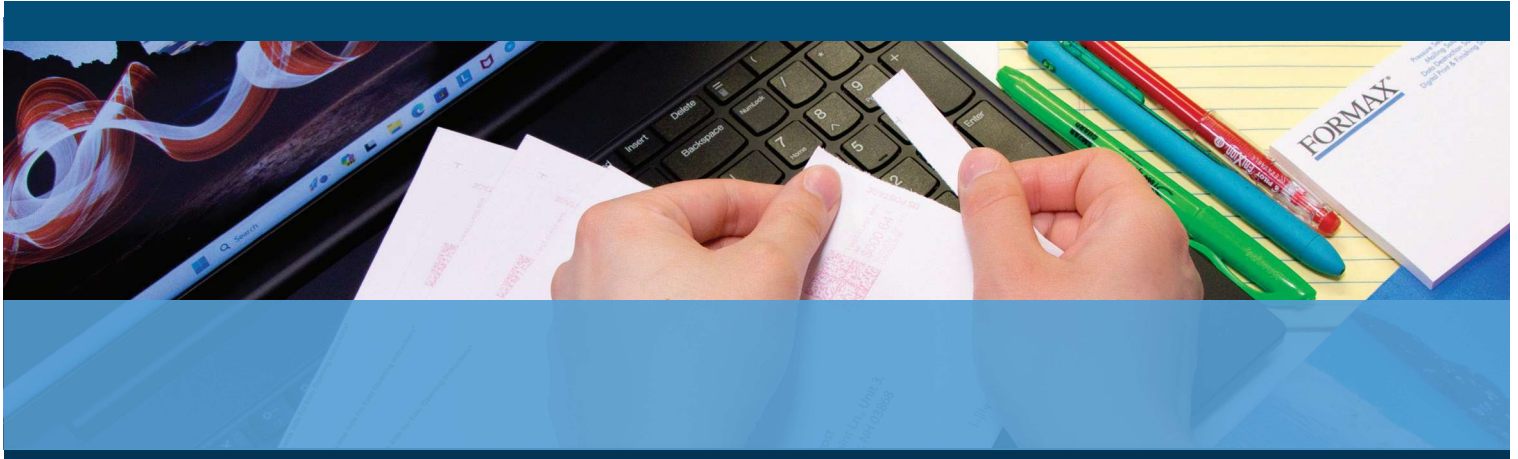




AutoSeal® FD 1506

MID-VOLUME PRESSURE SEALER



- Color touchscreen control panel
- Drop-in feed system
- Six-digit resettable counter
- Processes up to 100 forms per minute
- Handles forms up to 14" long

FORMAX®

www.formax.com

Local Dealer:

 PaperFolder.com

The **FD 1506 AutoSeal®** is a user-friendly mid-volume solution for processing pressure sensitive mailers, frequently used for applications that can be printed on one sheet, including checks, invoices, school reports, and tax forms. It processes a variety of forms, **up to 14" in length**, at speeds of **up to 100 forms per minute**. Standard features include a **graphics-based color touchscreen**, **drop-in top feed system**, **adjustable catch tray**, and **clearly marked fold plates** that can be set for custom folds. Fold types include Z, C, Uneven Z and C, Half and custom. The FD 1506 is proudly **built in the USA** with proven Formax technology, and is ideal for any church, school, or small business looking to utilize the convenience of pressure seal forms.



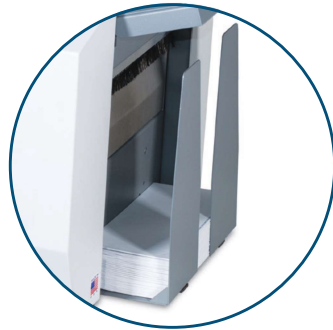
Color Touchscreen Control Panel
Graphics-based and designed for easy, walk-up use



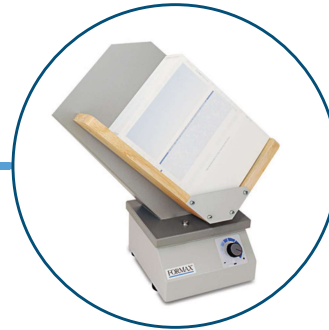
Drop-In Feeding System
Produces dependable feeding of forms without paper fanning



Clearly Marked Fold Plates
Marked with five of the most popular folds



Adjustable Catch Tray
Accommodates any fold type, stacks forms neatly and sequentially



Optional 402 Series Jogger
Reduces static electricity from forms and aligns them for proper feeding

STANDARD FEATURES

- Color touchscreen control panel
- Compact desktop design
- Drop-in top feed system
- 14" form length capability
- Processes up to 100 forms per minute
- Z, C, uneven Z and C, half and custom folds
- Hopper holds up to 200 forms
- Easy-adjusted pre-marked fold plates
- Six-digit resettable counter
- Adjustable catch tray
- Adjustable infeed side guides

OPTIONS

- 18" Conveyor with photo eye
- Reverse Stacking Conveyor: Allows for A-to-Z input and A-to-Z output
- Locking Cabinet with casters
- 402 Series Jogger

SPECIFICATIONS

Hopper Capacity	Up to 200 forms 20#
Fixed Speed	Up to 100 forms per minute, based on 11" Z fold
Paper Size	Up to 8.5" W x 14" L (216 x 356mm)
Fold Types	Z, C, Uneven Z and C, Half, Custom
Monthly Duty Cycle	Up to 35,000/month
Dimensions	24" L x 17" W x 13" H (610 x 432 x 330mm)
Weight	81 lbs (37kg)
Power	FD Model: 120 Volts AC 50/60Hz FE Model: 220 Volts AC 50/60Hz
Document Sequence	Standard sequence is A-to-Z input, Z-to-A output
Certifications	UL, CE, and CUL Approved
Made in USA	
U.S. Patents 5,772,841 5,865,925 5,968,308 6,264,592	