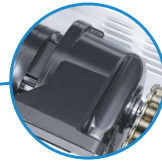


# OnSite

Shred at the Source!



**Chain-Driven AC Geared Motor:** Powerful, durable and built to outlast the competition



**All-Metal Gears:** Heavy duty steel gears for high performance and minimal noise



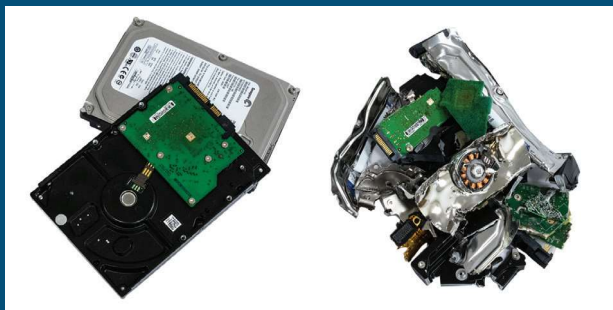
**LED Control Panel:** Easy to use with load indicator



**Separate Shredding Chambers:** Designed for continuous shredding of 3.5" HDDs and 2.5" HDD/SSDs

## FD 87HDS

HDD / SSD HARD DRIVE SHREDDER



3.5" HDD Hard Drives



2.5" HDD & SSD Hard Drives

Local Dealer:



# FORMAX®

www.formax.com

## Physically Destroying Hard Drives is the Best Way to Keep Data Secure

The Formax FD 87HDS HDD / SSD Hard Drive Shredder provides the best level of security by physically destroying discarded hard drives. **Separate shredding chambers** sized for 3.5" HDD and 2.5" SSD & HDD drives have sliding **metal shields for safety** and are designed for **continuous operation**. Its **chain-driven AC-gear motor** is housed in a solid-metal cabinet with casters for mobility and is engineered for low operational noise. Combining safety, durability, and an extra level of security, FD 87HDS is the best choice to protect your digital data.



**User-Friendly Control Panel**  
Door Open Sensor, Reverse,  
Waste Bin Full Indicator



**Commercial Grade**  
SSDs and HDDs are no match  
for the solid-steel blades and  
rugged chain-driven motor



**Separate Shredding Chambers**  
Metal safety shields for safe,  
continuous operation,  
and individual LED counters



**Rugged Waste Bin**  
Durable molded plastic for  
convenient collection  
of shredded particles



**Shreds Multiple Size Drives**  
Designed for shredding  
3.5" desktop HDDs, and  
2.5" laptop HDDs and SSDs

### OPERATING FEATURES

- Separate Shredding Chambers
- Shreds 3.5" HDD and 2.5" HDD and SSDs
- Designed for Continuous Operation
- LED Control Panel
- Fully Enclosed Chambers for Safety
- Heat-Treated Steel Cutting Blades
- Heavy Duty Chain-Driven AC-Geared Motor
- Resettable LED Counters
- All Metal Cabinet with Casters
- Front Access Waste Bin
- Rugged Molded Plastic Waste Bin
- Large Emergency Stop Button
- Thermal Overload Protection
- Safety Key Lock

### SUPPLIES

Cutting Head Lubricating Oil:  
#8000-10, six 8-ounce bottles per case

### WARRANTY

Cutting Head: 1 year warranty (parts only)  
All other parts: 1 year warranty

### SPECIFICATIONS

Feed Opening for 3.5" HDD	4.72" (120mm)
Feed Opening for 2.5" HDD & SSD	3.54" (90mm)
Shred Particle Size for 3.5" HDD	1.6" (40mm) x random
Shred Particle Size for 2.5" HDD & SSD	.19" (5mm) x random
Infeed Capacity	Continuous, 1 drive at a time
Speed *	3-4 drives per minute
Dimensions	24" W x 34" D x 49.5" H (600 x 850 x 1258mm)
Security Level	H-4 (DIN 66399 Standard)
Weight	1,102 lbs (500kg)
Power	220V 20A 3-Phase NEMA Plug / Receptacle: L1520P / L1520R
Certifications	CSA approved

\* Shredding speed and particle size vary based on media type and size